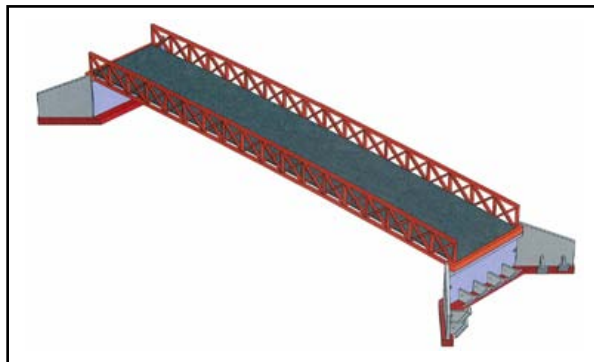
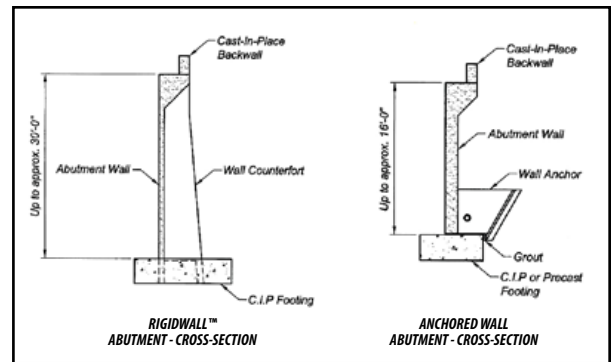


Precast Abutment System

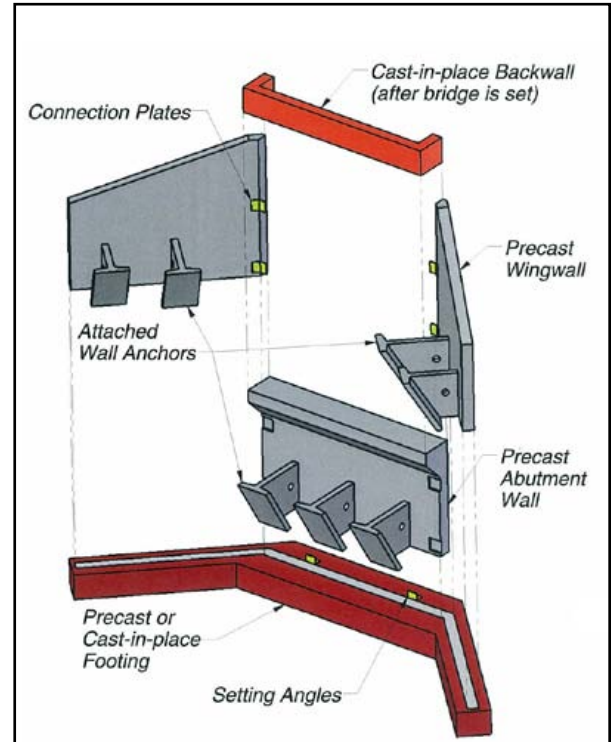
- Rapid installation
- Reduced on-site construction time means reduced traffic delays and detours
- Precast anchored wall system reduces excavation area
- Easy use of decorative finishes such as formliners
- Complete bridge solution from design support to material installation
- Patented system
- Extensive technical support



Precast Abutment with Truss – Can be used in conjunction with vehicular or pedestrian truss structures



Cross sections of abutment wall types – Wall style depends on required abutment height



Assembly View – Precast wall pieces are assembled on the footing and then typically backfilled prior to setting the truss superstructure



Precast Abutment System installed (Colerain, OH) – Readily available materials and precast pieces means quick installation and overall faster project cycles